

# Extractor Crane - Plymoth®

A heavy-weight extractor to handle heavy-weight problems



© Copyright. All rights reserved.



**PLYMOVENT AB**  
Industrigatan 26, Tangenten 2  
212 14 Malmö  
Tel. + 46 (0)40 30 31 30  
Fax. +46 (0)40 30 31 40  
www.plymovent.com  
export@plymovent.se

**PLYMOVENT CORP**  
115 Melrich Road  
Cranbury, New Jersey 08512  
Tel. (609) 395-3500  
Fax. (609) 655-0919  
www.plymovent.com  
info@plymoventusa.com

**PLYMOVENT LTD**  
Marley Way, Southam Road,  
Banbury, Oxfordshire OX16 2RA  
Tel. (01295) 25 93 11,  
Fax (01295) 27 17 50  
www.plymovent.com  
info@plymovent.co.uk

**PLYMOVENT Canada INC**  
24 - 1200 Aerowood Dr.  
Mississauga, ON L4W 2S7  
Tel: (905) 564-4748  
Fax: (905) 564-4609  
www.plymovent.com  
info@plymovent.ca

*PlymoVent Extractor Crane is a combined extractor and suspension arm for tools. A proven all-in-one solution for both removing fumes from the working environment and suspending your workshop equipment which will move around with you. Perfect for the heavy industrial environment including welding workshops, motor, plastics and chemical industries.*

**PLYMOVENT®**

# Fantastic! Everything hangs on PlymoVent's

## A robust, far-reaching partner that will stand up to any amount of use

The Extractor Crane consists of a rigid suspension arm, mounted with ball-bearings and hinged in the middle and a telescopic vertical section with a large extraction capacity.

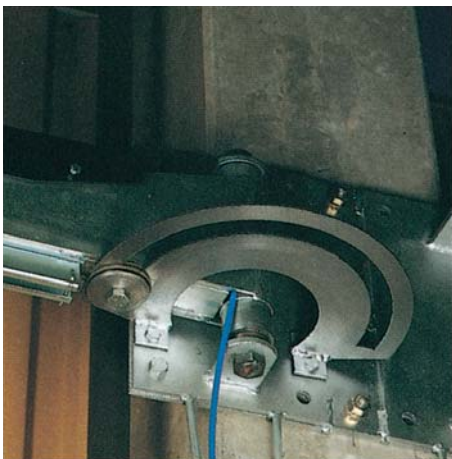
The suspension arm can easily be moved sideways and the hood raised and lowered with just one hand.

Even with heavy loads, wire feeders, cables, tools etc., suspended from the inner and outer arms, the Crane is still easy to move.

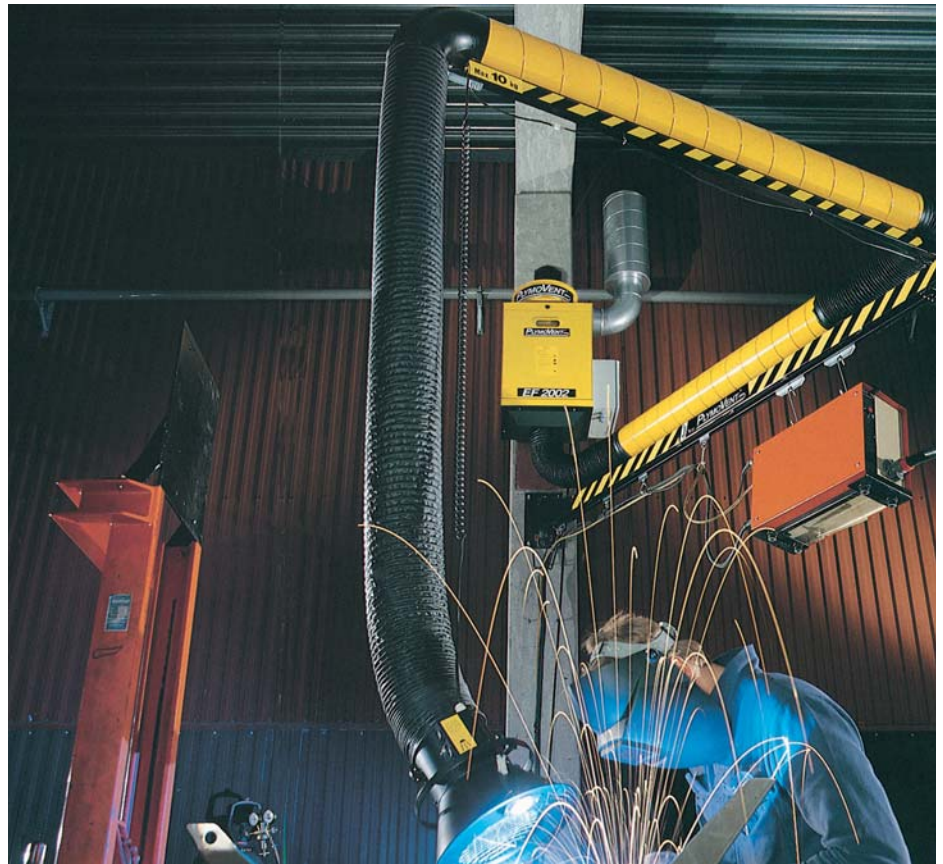
Handy, practical and ECONOMICAL!



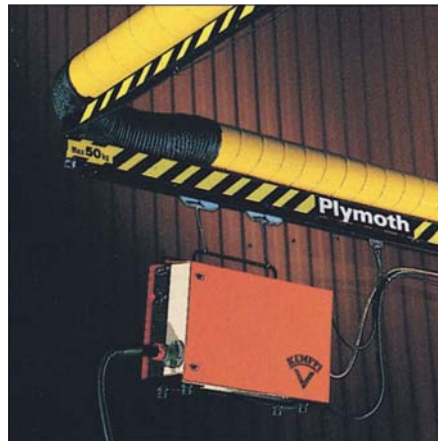
50 kg/110lb can be suspended from the inner arm which has a sliding services rail. 10 kg/22lb can be suspended from the outer arm. Perfect for tools etc.



A specially designed model of PlymoVent's Extractor Crane is equipped with a unique pneumatic "disc brake" in the wall mounting bracket of the swinging arm. The unenergized brake allows for an almost frictionless adjustment sideways. Efficient and safe locking is performed using the pneumatic lock, this is simply switched on and off by one hand from the hood control.



PlymoVent Extractor Crane with an EF-2002/AL-filter, fan and silencer.



## More advantages immediately

With the PlymoVent Extractor Crane you will reduce your costs by cutting down on wear and tear to your cables, hoses and tools, yet still have them at hand when you need them. And the workshop is, of course, a safer place - clean, healthy and with no risk of stumbling over equipment. Lots of advantages right from the moment you install it!

*PlymoVent offers you a clean working environment at the right price.*

## Lower Service Costs

Because tools, hoses and cables are suspended from the Extractor Crane, damage to these is avoided, thus reducing service and replacement costs.

## Time Saving

Move the Extractor Crane from one place to another and the tools, welding gun, grinding machine etc. will move with you. No loss of time. And time is money!

## More value for money

The PlymoVent Extractor Crane is less expensive than a conventional work-site extractor plus a separate jib arm. It will rationalise your work area, preventing collisions of equipment, and save you money by avoiding the double mounting costs.

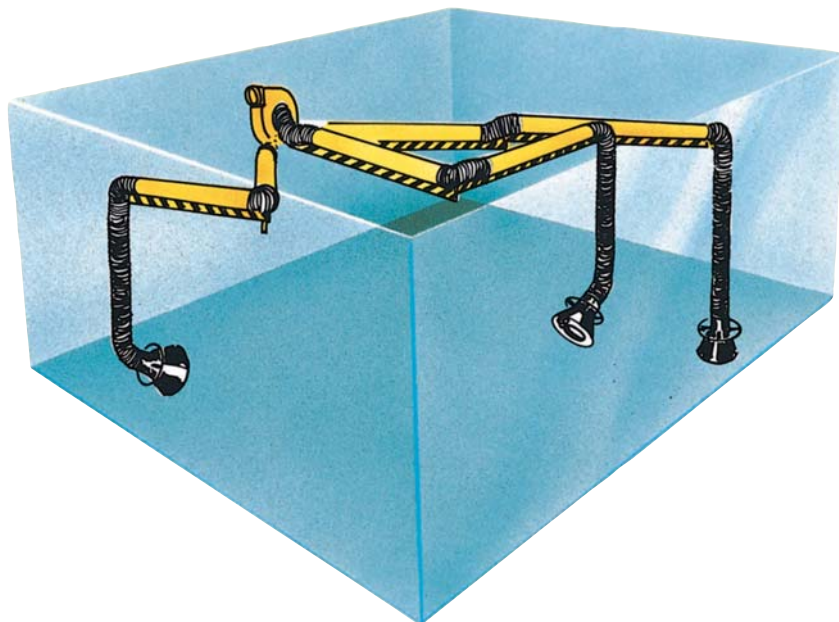
# Extractor Crane – Plymoth®



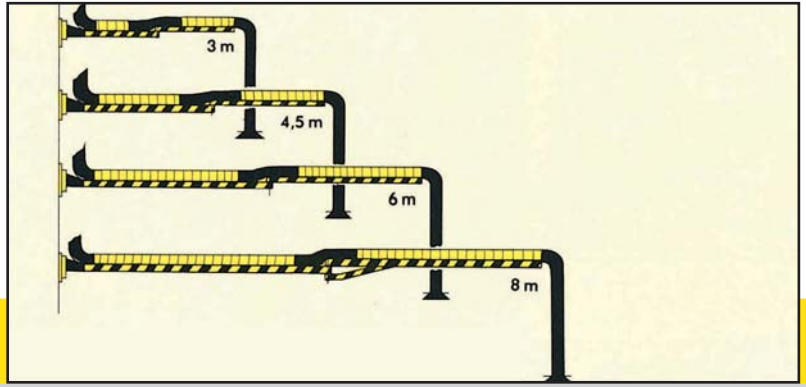
## ESSENTIAL FACTS

PlymoVent Extractor Crane is a combined extractor and suspension arm for covering large areas. Designed and built with heavy industry in mind. The suspension arm consists of 2 horizontal parts – one inner and one outer arm, both hinged in double ball-bearings with PlymoVent's patented friction brake. It has the facility to suspend 50 kg/110 lb from the inner arm and 10 kg/22 lb from the outer arm. Ideal for jig welding. Has a working radius right up to 8 m/26 ft.

The vertical extractor section can be extended and contracted telescopically. The hood is perfectly balanced and can be raised and lowered 1.6 m/5ft.



# Extractor Crane – biggest by far!



## TECHNICAL DATA

### PlymoVent Extractor Crane UK

(Wall bracket, arm, hose and hood with damper included)

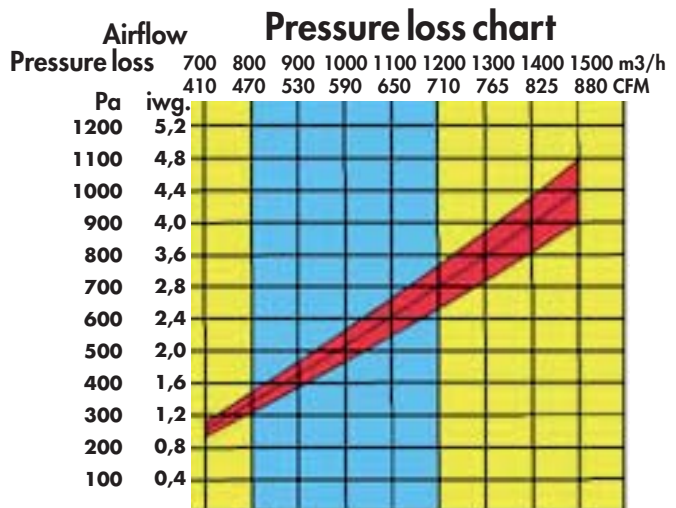
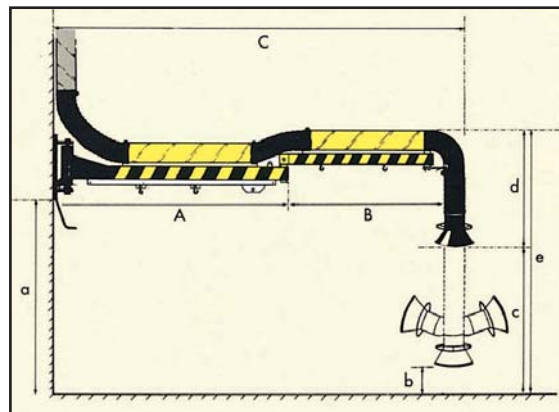
Prod. no.	Hose/tube diameter	Max. working radius	Length horizontal hose & tube	Length vertical hose	Total hose/tube length
UK-3016	160mm/6.25"	3,0m/10ft	3,70m/14ft	3m/10ft	6,70m/23ft
UK-4516	160mm/6.25"	4,5m/15ft	5,25m/20ft	3m/10ft	8,25m/28ft
UK-6016	160mm/6.25"	6,0m/20ft	6,90m/26ft	3m/10ft	9,90m/30ft
UK-8016	160mm/6.25"	8,0m/26ft	8,90m/30ft	3m/10ft	11,90m/40ft

### Fans for mounting directly to the wall bracket

(Note! The fans should be fitted with the recommended motor overload).

Prod. no.	Motor kW/hp	Approx. airflow at the hood with 10 m/30 ft outlet duct			
FUK-1800	0,55/0,75	1000m <sup>3</sup> /h / 700CFM			
FUK-2100	0,75/1	1200m <sup>3</sup> /h / 825CFM			
FUK-2101	0,75/1	1200m <sup>3</sup> /h / 825CFM			

\* For installation in PlymoVent starter panel. For other installations, please contact our customer service.



Welding: 800–1200 m<sup>3</sup>/h / 500-700CFM

Prod. no.	A	B	C	a	b	c	d	e
UK-3016	1550mm/61"	1200mm/47"	3000mm/118"	3200mm/126"	550mm/22"	2100mm/83"	1400mm/55"	3500mm/138"
UK-4516	2550mm/100"	1750mm/69"	4550mm/179"	3200mm/126"	550mm/22"	2100mm/83"	1400mm/55"	3500mm/138"
UK-6016	3550mm/140"	2400mm/94"	6200mm/244"	3150mm/124"	550mm/22"	2100mm/83"	1400mm/55"	3500mm/138"
UK-8016	4550mm/180"	3400mm/134"	8200mm/323"	3150mm/124"	550mm/22"	2100mm/83"	1400mm/55"	3500mm/138"